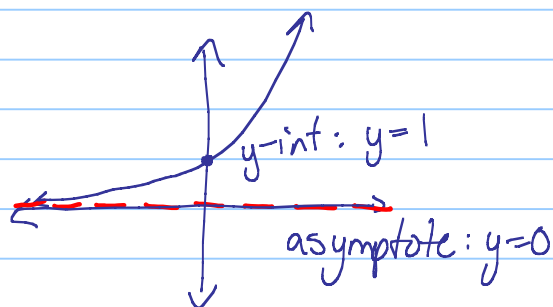


5.1-2 Exponential Functions

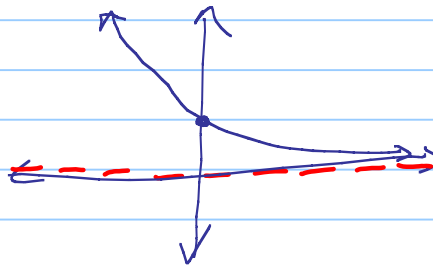
Note Title

23/10/2012

The function $y = b^x$
for $b > 1$:



for $0 < b < 1$

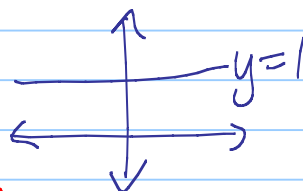


For $b < 0$:

x	$(-2)^x$
0	1
1	-2
2	4
3	-8

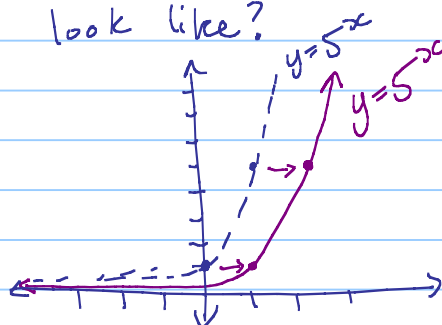
Doesn't
make a
curve, so
not an exponential
function

For $b = 1$: $y = 1^x$
 $= 1$



This is
a linear function

What would the graph of $y = 5^{x-1}$
look like?



↑
shift to
right by 1